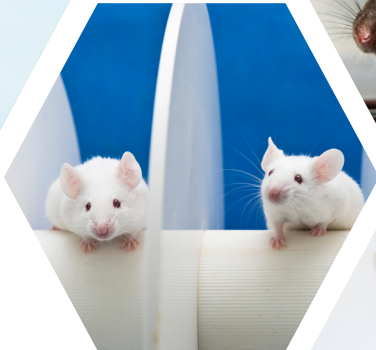




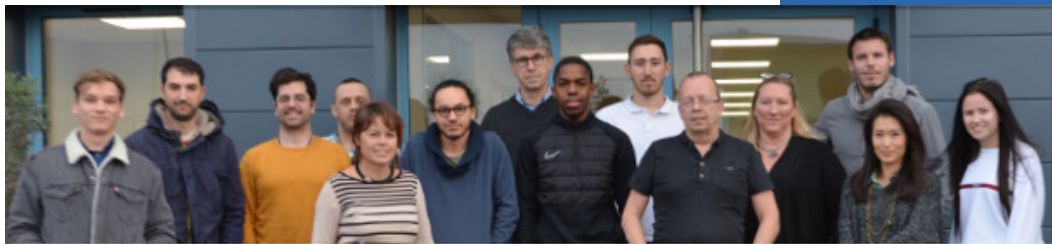
Created in 1990
More than 30 years of experience Worldwide

Rodent's Behavior Solutions



Contents

- 03 Introduction
- 04 VideoTrack : Tracking software
- 05 Mazes and equipments
- 06 OneiRos : Wireless Electrophysiology
- 08 Marlau : Enriched environment cage
- 10 SleepLab : Sleep scoring software
- 12 GaitLab : Gait analysis via catwalk methods
- 14 Phenorack : Home Cage monitoring 24/7
- 16 Hamlet Test : Learning test apparatus
- 17 VigiePrimate : Tracking software



Introduction

Pioneer in automated behavior analysis

Established in 1990, ViewPoint has more than 30 years of experience in animal behavior analysis, and was the first company to offer automated tracking of behavior for Rodents and has since stayed an innovative leader providing various apparatus and capabilities.

We offer our expertise in video image processing to stakeholders working on the major challenges of the planet : health, water, food.

ViewPoint offers complete solutions for behavioral scientists, which give access to high throughput screening, reliable data, better time and cost efficiency and ground breaking studies.

Our products are applicable to virtually any behavioral experiment, allowing researchers to use our products in any field, to study an unlimited number of topics. Our team of engineers bring a vast amount of technical knowledges, and work closely with our user community to offer advanced solutions.

Innovation is the core of our company. ViewPoint is recognized as the leader in the industry, and is the go-to resource for the best scientists looking for reliable video tracking solutions.



www.viewpoint.fr



info@viewpoint.fr



+33 4 72 17 91 92

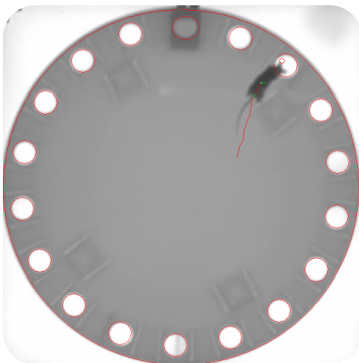
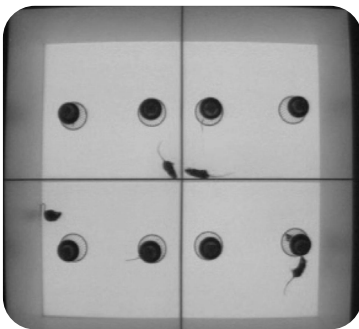
VideoTrack

Rodents Behavioral analysis

The VideoTrack system was the first of its kind and has been developed by ViewPoint since 1990.

Originally designed for the measurement of rodent behavior, VideoTrack can be adapted to virtually any type of maze or arena. Automated video tracking saves substantial time, and money.

The versatility of the system has made VideoTrack the researchers' choice over the years. You are able to automate a wide range of tests.



Wide range of tests:

- Morris water maze
- Object recognition
- Social interactions
- Elevated Plus Maze
- Place preference
- Drosophila monitoring
- Forced swim test
- Open field
- And many more ...

Mazes and equipments

ViewPoint offers a wide range of transparent infra red light standard & custom maze. We can provide you any specific size or shape. For any question, feel free to contact us.

- Conditioned place preference
- Black & white box
- T, Y, O Mazes
- Sociability Chamber
- Elevated Plus Maze
- Morris water tank
- Openfield
- Barnes Maze
- Cheese board
- Radial 8 arms maze
- ...

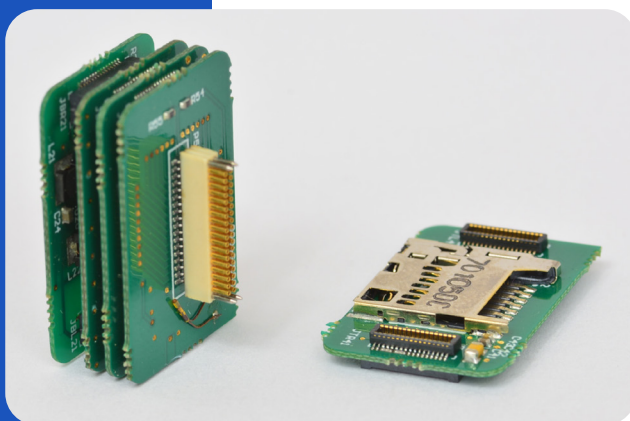


OneiRos

Wireless Electrophysiological System

ONEIROS is a new, miniaturized, low power consumption electrophysiological measurement system designed for conducting research on freely moving subjects. This new electrophysiological measurement system is capable of recording up to 8 electrophysiological signals (6 referential and two differentials), metabolic and behavior via an accelerometer for several days, up to three temperature sensors.

OneiRos is designed to provide researchers with a tool that overcomes the limitations of existing wireless devices.





Product features:

- Wireless telemetric / data logger system
- Flexible configuration of the channel number
- Autonomy and sampling rate
- Customize data acquisition according to your needs

Wide adaptations on:

- Conduct research on different animal species. (rodent, bat, hen, aquatic species)
- Neuroscience applications (PTSD, addiction, diseases...),
- Behavioral tasks and brain related activities

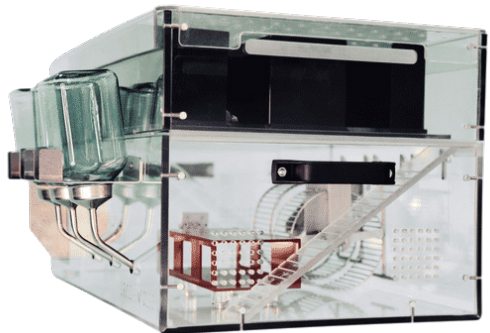
Marlau

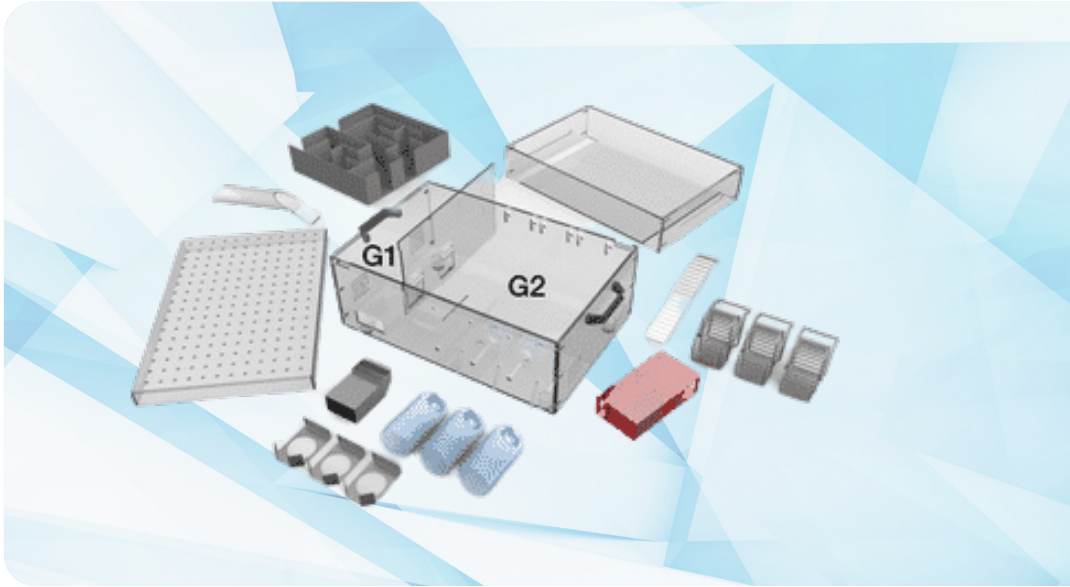
Environmental enrichment cage

In research, standardized conditions are extremely important. They are crucial for reproducibility and reliability of the data obtained.

ViewPoint recognized this crucial and essential problem in this area of behavioral research and introduces Marlau as the solution, which combining novelty and complex inanimate and social stimulations, influences brain plasticity and protects against the effects of brain insult.

The first of its kind, it offers researchers to standardize home cage enrichment, which consequently generates more reliable and more reproducible data. Researchers do not need to describe in detail the methods of enrichment used in their publication; enrichment is now a standardized piece of equipment that can be easily referenced.





Activity : Increased activity is encouraged by the enlarged exploration area and free access to running wheels.

Complexity : Moving through a maze is motivated by the need to find food : water and pellets are placed in two separated compartments.

Novelty : the maze is changed 3 times a week (12 configurations available)

Wellbeing : Social interactions are promoted by the housing together of many of animals (12 rats or 18 mice per cage). A red tunnel protects them from light during the resting period.

SleepLab

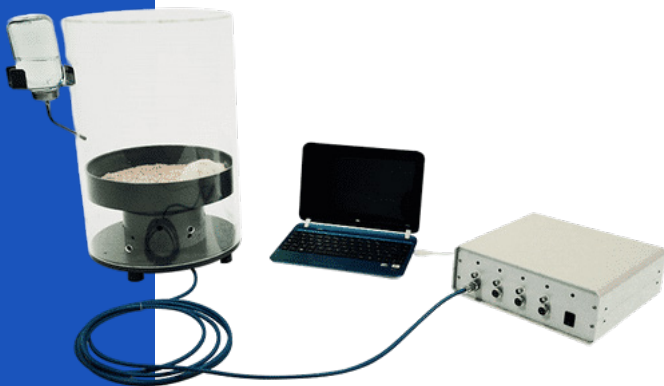
Sleep deprivation for rodents

SleepLab is a software allowing the acquisition of electrophysiologist signals needed in the animal sleep analysis.

Sleep Deprivation System's goal is to wake the animals in a non-intrusive manner, no contact, no poke done.

Thanks to this system, an electrical pulse is applied to an electromagnet placed under the platform that pushes it up and wakes rodents up. This simple setup can be used to work on partial or total sleep deprivation.

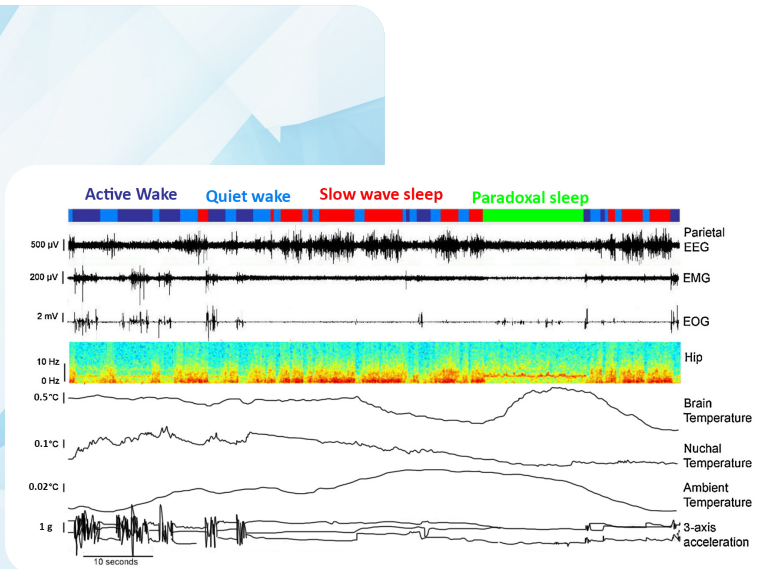
ViewPoint provides a complete turnkey solution to study Sleep & Awakening phases from your electrophysiologist signal.



SleepLab software allows the acquisition of electrophysiologist signals required in animal sleep analysis. It offers the opportunity to quantify the distribution of various states of vigilance over several days and a spectral analysis.

Its scoring algorithm analyses vigilance states, totally or partially overseen. It uses a probability approach with no threshold.

This feature offers the ability to make a specific deprivation of slow wave sleep (SWS) or paradoxical sleep (REM sleep) when coupled to a SleepLab chamber.



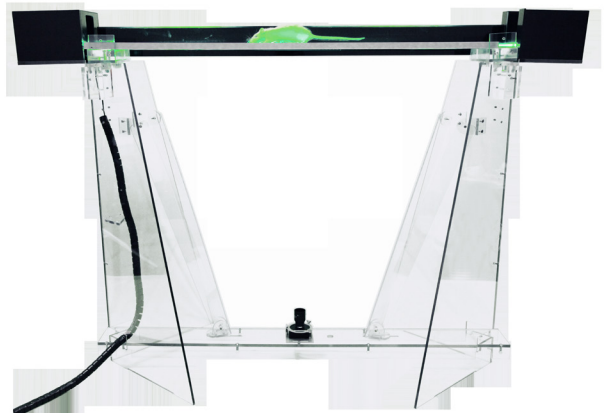
GaitLab

Quantitative gait analysis system for Rodents

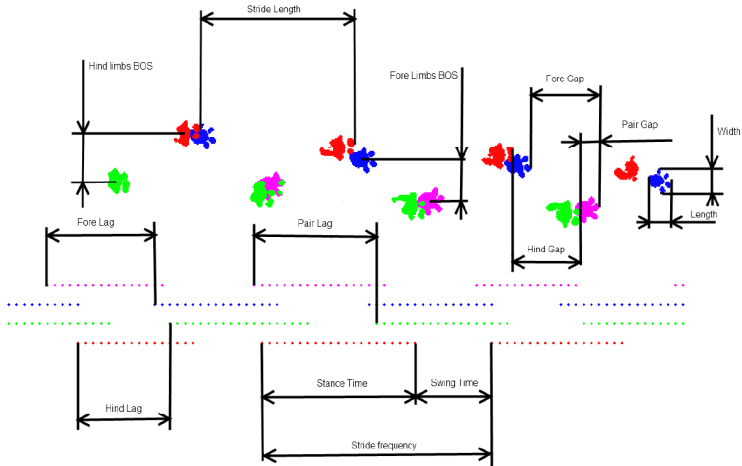
A quantitative gait analysis system for Rodents
GaitLab is an automated quantitative gait analysis system for rodents, based on the CatWalk Method. A single system can work on both : mice and rats.

The GaitLab turnkey system allows evaluation of many locomotor defects, such as those occurring in Parkinson's disease, arthritis, spinal cord injury.

Different endpoints can be assessed depending on your field of interest (animal speed, footprint area, paw area, mean intensity, number of contact areas...)



Gait parameters



Available calculations:

- Animal speed
- Footprint area stride length and frequency
- Stance time, swing time
- Individual paw length and width
- Fore lag, pair lag, hind lag
- Fore gap, pair gap, hind gap
- Number of contacts per paw

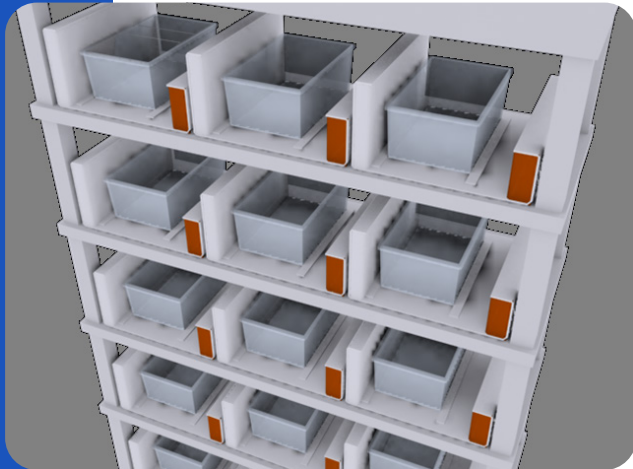
Easy analysis !

- Save time
- Accurate results
- Reliable imaging over time
- Real time trial validation
- Easy access to the animal

Phenorack

Home cage monitoring system

PhenoRack is the most cutting edge home cages monitoring tool on the market today.



Plug and play !

In a few steps, start monitoring the behavior of your animals in a stress-less environment.

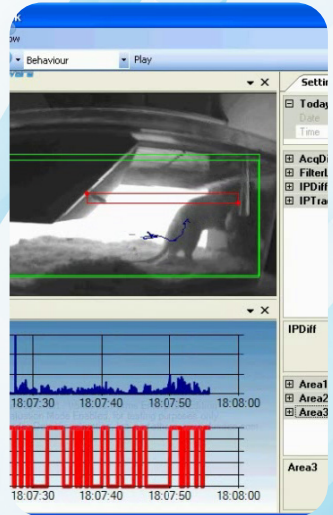
Phenorack analysis locomotion, activity and many behaviors of your animal 24/7 for an unlimited number of boxes.

High accuracy in supplying data:

- Phenorack analyses from live in real time any number of animals
- High resolution and filters make it possible to adapt to the most demanding laboratory environments

Our software is developed according to good laboratory practice:

- Data security and reliability are maximized
- Results can be easily transferred to your spreadsheet or statistical software



Hamlet Test

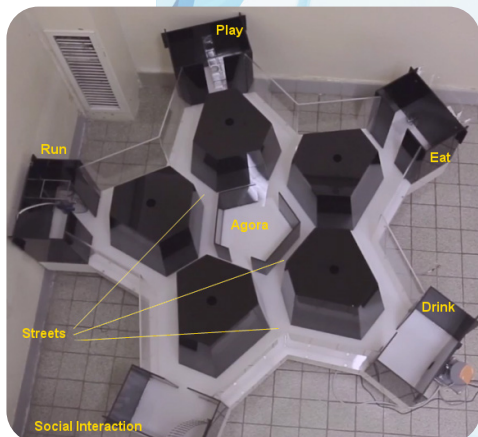
A learning task analysing animals' ability

A learning task analyzing animals' ability to familiarize with a complex environment and decidedly adopting an anthropomorphic approach. The Hamlet Test apparatus mimics a small village, comprising a central agora and streets leading to functioned houses.

Animals can be trained in the Hamlet for days or weeks in groups and their ability to orientate can be tested after short or long time periods, in normal or pathological conditions. The tracking system can be used in dark conditions thanks to the IR light floor.

The Hamlet test offers the unique opportunity to introduce new paradigms :

- Play with novomaze
- Run into activity wheel (distance travelled, speed)
- Interact with a congener
- Drink (liquid consumption- ml/ animal)
- Eat (food consumption - g/ animal)

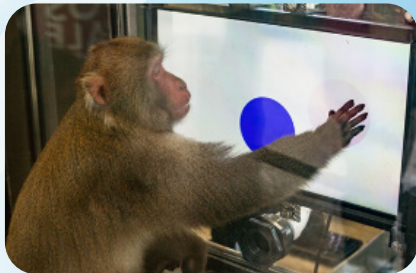


Vigie Primate

An automated system that measures primate activity

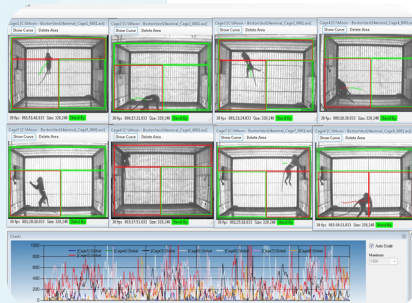
VigiePrimate is a high throughput system able to perform long-term observation of primates in their cages. Indeed, it monitors the behavior of your animals in a stress-less environment. VigiePrimate analyses behaviors and movements of the animals continuously 24 hours a day, 7 days a week for up to 16 cages at the same time. It also allows you to use your existing telemetry system to score physiological information.

The system is composed of: autonomous InfraRed lighting wall panels, cameras which can be placed either on the side and/or at the top and/or in front of the cage, and of our most advanced automated behavioral analysis software.



Available calculations :

- **Locomotion** : distance traveled, speed and duration of movements
- **Behavior** : climbing, resting, food intake (eating, drinking)
- **Activity levels** : freezing, ambulatory movements and burst



ViewPoint behavior technology

Our motto

Working for the well-being of the people and the Earth, in a spirit of benevolence and commitment..

Our core values

Viewpoint and all of its collaborators are committed to our customers and partners around the values they hold dear :

HONESTY

Motivate, respect our motto and our values

COMMITMENT

Motivate, set an example, don't take the easy way out

KINDNESS

Show mutual aid, solidarity and tolerance

PLEASURE

Working in a friendly and pleasant atmosphere, developing interest in the work



Don't miss our other technologies through the discovery of our catalog specific to zebrafish and other aquatic species behavior.

Contacts :

North America

info@vplsi.com
+(1) 514 343 5003

Europe

info@viewpoint.fr
+33 (0)4 72 17 91 92

Asia Pacific

info@viewpoint.cn.com
(+86) 021 61767237 / 7233

ViewPoint

Behavior Technology

www.viewpoint.fr
info@viewpoint.fr



@ViewpointBehav



ViewPoint Behavior
Technology