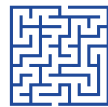


MARLAU CAGE

ENVIRONMENTAL ENRICHMENT CAGE



Standardized Enriched Environment



Novelty

Maze is changed 3 times a week offering 12 different configurations



Complexity

Locomotion is motivated by food: water and pellets are in separated compartments.



Well Being

On-going exercise & social interaction are constant. Tunnels, ladders, sliders and nesting areas are available.



Activity

Increased activity is encouraged by enlarged exploration area and three running wheels

Environmental enrichment for rodents

The exact nature of the environmental enrichment protocols used in laboratories varies widely from one to another and is most of the time not fully described in published experimental methods.

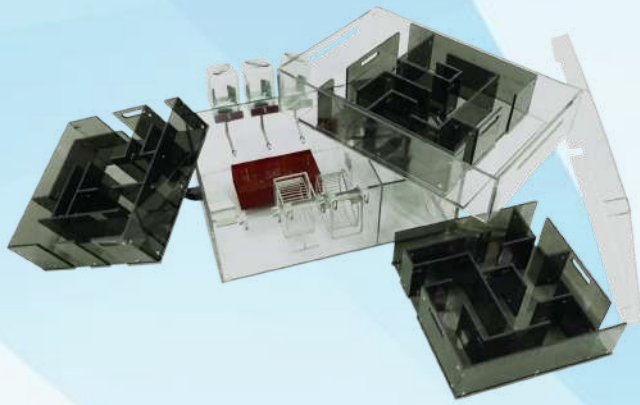
The Marlau cage has been developed in collaboration with researchers to standardize housing enrichment.

The Marlau Cage offers the unique opportunity for researchers to standardize housing enrichment and introduce new paradigms: complexity, activity, novelty and wellbeing.

"The water maze test demonstrates that rats housed in enriched cages (Marlau) exhibit a greater exploratory behavior than rats house in standard cages."

"The performance is enhanced, stress levels lowered"

"The brain plasticity of my animals has been doubled"



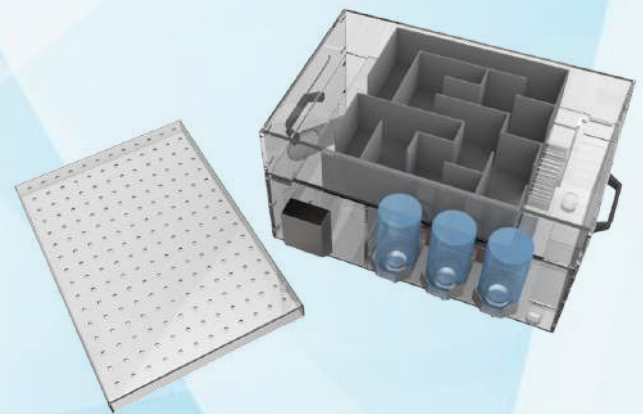
Amazing development, smart animals
Environmental enrichment for rodents, combining novelty, complex environment and social stimulations, influences brain plasticity and protects against the effects of brain insult. We engineered the Marlau cages for rats and mice to provide continual stimulation of cognitive function during enrichment procedure using mazes.

These cages are composed of a ground floor with two compartments separated by a one-way door: one contains food pellets and the other water bottles, a replacable maze is placed on the upper floor.

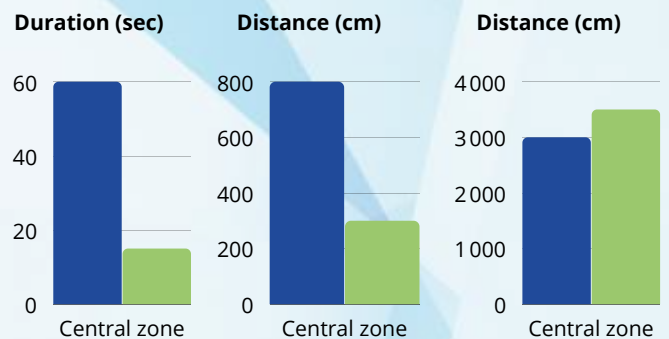
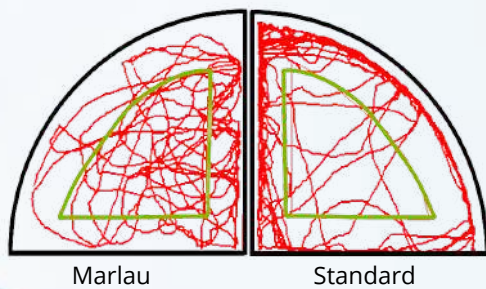
To reach the food, rodents must climb to the upper floor, cross the maze and slide down via a tunnel.

Imposing such a path to procure food or water ensures all animals to have equal access to the different features of enrichment, cognitive stimulation being maintained by regular changes of maze configuration.

Each cage can host up to 18 animals.



Exploratory behaviour



PROVIDED SERVICES

Update

All updates are compatible. You can constantly improve your research.

Training

Provided with an on-site training. All the users will know how to get the best from our solution.

Remote support

Constant remote support available. We can quickly provide assistance, diagnose, and fix any issue.

Worldwide coverage

Worldwide offices. From protocol setup to assistance or maintenance, you are not alone.